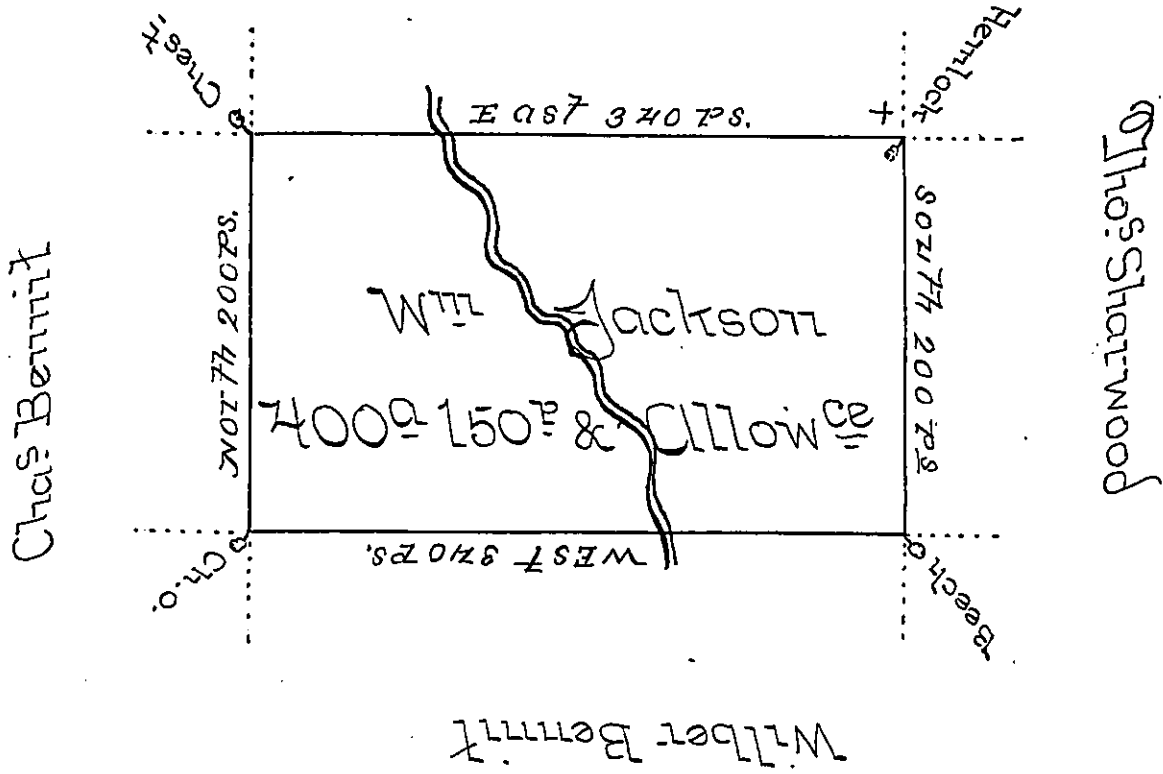


Silas Jackson



A Draught of a Tract of land obliterated —
 of Little Sugar Creek in the County of Luzerne contain-
 ing Four hundred Acres, 150± and Allow± of six PC±
 for Roads &c. Surveyed July 27th 1793 on a Warrant
 to Wm Jackson dated the 15. Aug^r 1793. —

Joy Wallis D.S.

To Dan: Brodhead Esq:
 Surveyor General —

IN TESTIMONY that the above is a copy of the original remaining on file in
 the Department of Internal Affairs of Pennsylvania, made
 conformably to an Act of Assembly approved the 16th day of
 February, 1833, I have hereunto set my Hand and caused
 the Seal of said Department to be affixed at Harrisburg,
 this — first — day of — November — 1898. —

James W. Patton
 Secretary of Internal Affairs.